



Photo: UN Women, Rakhine, 2019

OUR WORK IN

Myanmar

2022-2023

COUNTRY CONTEXT

Myanmar is a lower middle-income economy with a Human Development Index of 0.585, ranking 149 out of 191 countries. It is considered a 'medium development' country.¹

Notwithstanding ongoing conflicts and frequent natural disasters, Myanmar had achieved significant development gains between 2011 and 2020 during a period of gradual transition to democracy and economic liberalization that included the formation of its first civilian government in 2016.

On 1 February 2021, however, a military takeover overhauled the civilian government. More than two years later, the political, security and humanitarian crisis is dramatically worsening. It is not only a deeply gendered, political, and human rights crisis, but it is also reversing and erasing the development gains made over the last decade.

As of July 2023, the overall number of internally displaced people is almost 1.9 million, 17.6 million people need urgent humanitarian assistance, and the country is facing a multi-layered protracted crisis.

GENDER EQUALITY LANDSCAPE

Myanmar rates low in the Women's Empowerment Index and the Global Gender Parity Index², indicating that women in Myanmar have a low level of power and freedom to make choices and seize opportunities in life, and that their status relative to men in core dimensions of human development is significantly lower.

The crisis in Myanmar has strongly gendered impacts, with women often bearing the brunt of additional and more resource-heavy and time-consuming care work, increased food insecurity, and the risk of gender-based violence (GBV).

Despite the challenges, women-led civil society organisations in Myanmar continue to play a critical leadership role in promoting human rights and highlighting the gendered impacts of the ongoing crisis.

1 UNDP, Human Development Report 2021/2022. Available [online](#).

2 UN Women and UNDP, The paths to equal: Twin indices on women's empowerment and gender equality 2023. Available [online](#).

Myanmar snapshot

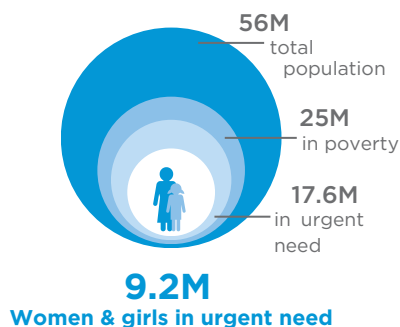
HUMAN DEVELOPMENT INDEX¹

0.585

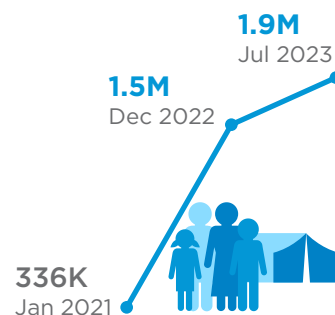


Myanmar is considered a **medium development** country

HUMANITARIAN NEED²



INTERNALLY DISPLACED³



Gender Inequality Index⁴

0.498



Women's Empowerment Index⁵

0.518



Myanmar is in the **Low Women's Empowerment** grouping of countries

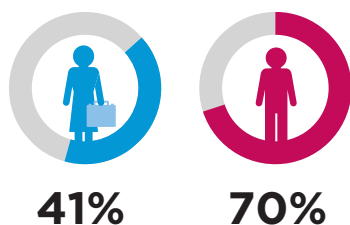
Global Gender Parity Index⁶

0.598

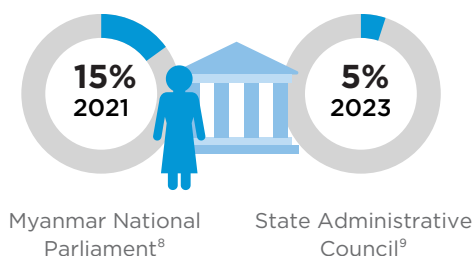


Myanmar is in the **Low Gender Parity** grouping of countries

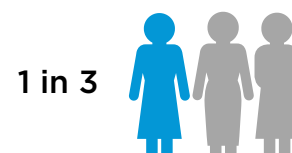
Labor force participation by sex⁷



Proportion of women in national governance (% of total seats)



Women who feel unsafe in their own home at night¹⁰



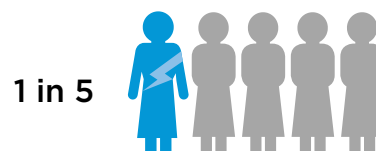
Women who can't do paid work due to caring duties¹¹



Women who lost their job in 2020 and 2021¹²

730K

Women who've witnessed violence against woman & girls in their neighbourhood since COVID-19¹³



1 UNDP, Human Development Report 2021/2022. Available [online](#).

2 UN OCHA Myanmar Humanitarian Needs Overview 2023, Available [online](#).

3 Ibid.

4 UNDP, Human Development Report 2021/2022. Available [online](#).

5 UN Women and UNDP, The paths to equal: Twin indices on women's empowerment and gender equality 2023. Available [online](#).

6 Ibid.

7 UNDP, Human Development Report 2021/2022. Available [online](#).

8 UNDESA SDG Indicator Global Database, 2023. Available [online](#).

9 Global New Light of Myanmar, 4 August 2023. Available [online](#).

10 UN Women and UNDP, Regressing Gender Equality in Myanmar: Women living under the Pandemic and Military rule, 2022. Available [online](#).

11 Ibid.

12 Ibid.

13 Ibid.

UN Women Myanmar's contributions

GENDER RESEARCH & ANALYSIS

UN Women Myanmar has significantly contributed to the availability of data, research, and analysis on the gendered impact of Myanmar's crisis, which is critical for informing evidence-based responses across the humanitarian, development and peace-building nexus, including:

- **Research on the impact of the crisis on gender equality in Myanmar** in collaboration with UNDP.
- **Research on urban poverty** in low-income communities in Yangon including in townships under martial law, in collaboration with UNDP.
- **Rapid Gender Assessments** and ongoing technical advice to mainstream gender in the UN Myanmar Country Team's planning and programming.

SUPPORTING WOMEN'S LEADERSHIP & PARTICIPATION

UN Women Myanmar supports women leaders to increase their skills and expertise in participating in decision-making and advocacy, including by:

- **Supporting Myanmar women peacebuilders** to develop their peace promotion skills through training and knowledge exchange.
- **Providing institutional training and technical capacity building** on a range of topics including leadership, resource mobilization, information management, safety and security, basic entrepreneurship, financial management, Gender in Humanitarian Action and sustainable livelihoods.

PROTECTION OF WOMEN AND GIRLS' RIGHTS

UN Women Myanmar supports women and girls affected by crisis by providing and gender mainstreaming critical services, including by:

- Collaborating with UNFPA to draw on the distinct expertise of each agency in **providing integrated GBV prevention and response services**, including cash-based interventions, strengthening GBV referrals with livelihood support, and community protection services.
- **Providing cash assistance** to GBV survivors, human trafficking survivors, and women facing economic hardship, and supporting women to find paid employment.
- **Training community members** on sexual health and reproductive rights, CEDAW and GBV so they can promote women's rights and raise awareness about the prevention of sexual and gender-based violence in their communities.

STRENGTHENING WOMEN'S RESILIENCE, RELIEF AND RECOVERY

UN Women Myanmar supports women and women-led CSOs to actively participate in responding to the relief and recovery needs of crisis affected women and girls, including by:

- **Facilitating the Women's Peace & Humanitarian Fund (WPHF) in Myanmar**, which has opened annual funding calls in Myanmar since 2020. Since 2022, the WPHF has provided small grants to 13 WCSOs that have directly supported more than 75,000 people in 86 townships across the country with emergency aid, access to critical services, capacity building, awareness raising and other humanitarian support.
- **Supporting women-led small businesses** with business skills training, networking sessions, help improving their business plans and small grants to support growth.

UN Women Myanmar's strategic priorities

The **UN Women Myanmar Interim Strategic Note 2022-2023** is derived from the global women, peace and security (WPS) framework and is aligned with the UN Women global strategy and the UN Myanmar Socio-Economic Resilience Response Plan (SERRP) and the Humanitarian Response Plan.

The strategic note covers four outcome areas aligned to the global WPS framework pillars of **participation**, **protection**, and **relief & recovery**.

OUTCOME 1 ENABLING ENVIRONMENT FOR GENDER EQUALITY	OUTCOME 2 WOMEN'S LEADERSHIP & PARTICIPATION	OUTCOME 3 WOMEN & GIRL'S PROTECTION	OUTCOME 4 RELIEF & RECOVERY
<ul style="list-style-type: none">• Evidence and data generation contributes to an enabling environment for the implementation of the WPS agenda.• Technical assistance on integration of gender equality in inter-agency coordination across the humanitarian, peace and development nexus contributes to gender-responsive programmes and policies.	<ul style="list-style-type: none">• Institutional and technical capacity building contributes to enhanced participation and leadership of women in decision-making and political processes across the humanitarian, peace and development nexus.	<ul style="list-style-type: none">• Access to protection services for women and girls, particularly in conflict and crisis-affected settings.• Prevention and response to Gender based violence through GBV referrals and livelihood services.	<ul style="list-style-type: none">• Institutional, technical and financial support to women-led and women rights organisations to lead and participate in relief and recovery efforts.• Support more women and girls, including the most vulnerable and marginalized groups, to access, contribute to and benefit from relief and recovery efforts and increase their economic security and capacity to withstand the negative socio-economic impact of the crisis.





Our funding partners



Norwegian
Government



Achieving the Sustainable Development Goals by 2030 calls for transformative, collaborative action. Strategic, innovative, and efficient funding partnerships are essential to realize UN Women's vision of a gender-equal world, articulated in the Strategic Note.

To learn more about UN Women Myanmar's funding partners landscape visit our [Transparency Portal](#).



For more information

Contact UN Women Myanmar

Tel: +95 123 596 01581

communications.mmr@unwomen.org