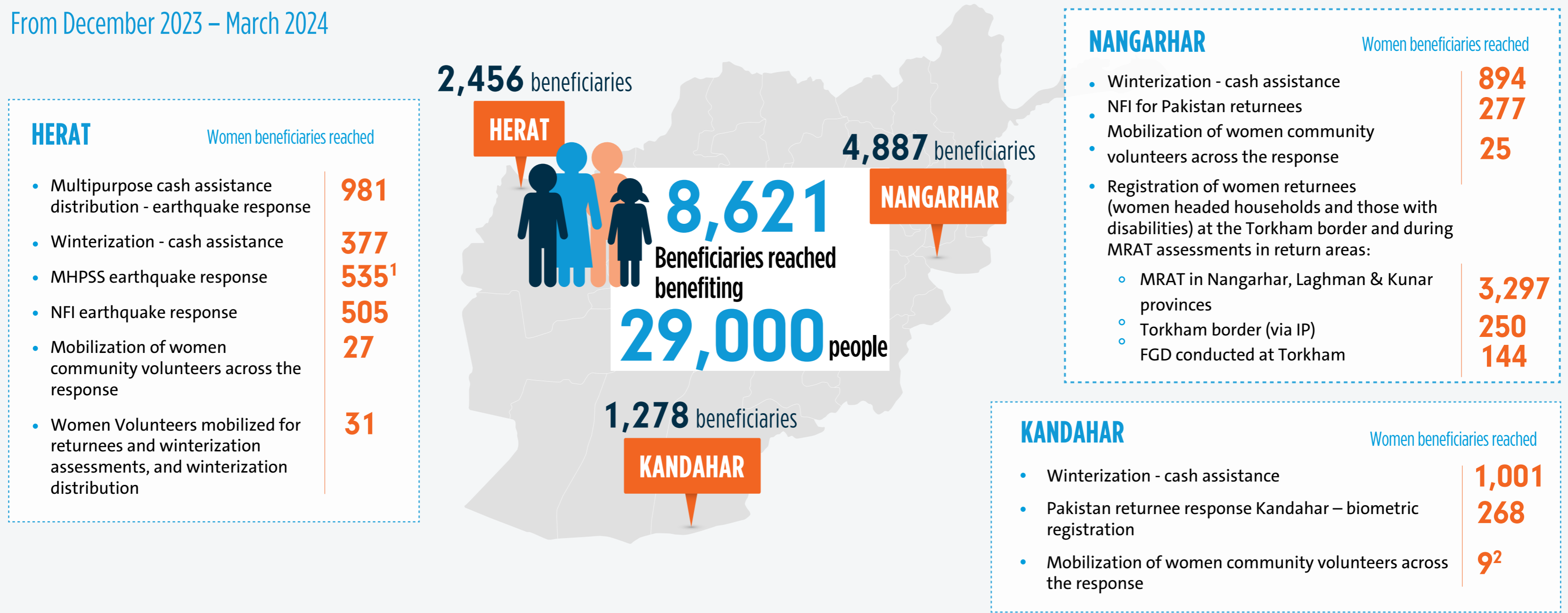


# Response to Emergency: Pakistan Forced Returnees' Crisis and the Herat Earthquake

From December 2023 – March 2024



## Pakistan Forced Returnees' Crisis

**1. BORDER MONITORING:**

- Collaborate with UN, INGO, local partners, and women volunteers to monitor the Torkham border point, focusing on women and girls.
- Support registration of women-headed households, collect data, and conduct regular field missions.

**2. WINTERIZATION CASH AND NON-FOOD ITEMS (NFIS) ASSISTANCE:**

**2.1. NANGARHAR:** Provide NFI packages to returning women headed households at the Torkham border point and in Nangarhar.

Reached **197** women headed household out of **250**, with 80 receiving shelter materials and hygiene packages.

**2.2. KANDAHAR:** Launch a safe-reintegration program focusing on returnees settled in Kandahar, their host communities, capacity development and **start-up support**.

<sup>1</sup> Individual Counseling: With a total of 4 PSS (2 male, 2 female) a total of beneficiaries (423) individuals received PSS counseling with a breakdown of (263 women, 18 girls, 74 men, and 43 boys); Group Counseling: Total 13 group sessions, with a total of 112 beneficiaries (77 women 5 girls, and 30 boys), during the project duration.

<sup>2</sup> 7 women volunteers and two women journalists



### 3. KNOWLEDGE PRODUCTION:



Organize focus group discussions with women returnees.



Mobilize local female journalists to collect stories of affected women, communicated evidence-based data further to donors, humanitarian platforms.



### 4. GIHA WORKING GROUP'S GENDER ISSUES ALERTS:

- Develops two alerts highlighting gender issues in returnee response: [1. Gender update #1: Forced Returns from Pakistan](#) [2. Gender update #2: Forced Returns from Pakistan](#)
- Gender Engagement Training for Eastern Region: Strengthening NGOs and cluster Members in gender awareness and mitigation strategies for humanitarian response.



### 5. SUPPORT TO RETURNEES IN RETURN AREAS IN THE EASTERN REGION:



#### OCHA led Rapid Needs Assessment

- Covering 10 districts in Nangarhar, 8 districts in Kunar, 3 districts in Laghman.

- UN Women by GiHA WG reviews tools, deploys women volunteers, provide technical support to clusters and the working groups.

## Response to the Herat Earthquake



### 1. MULTI-SECTORAL NEEDS ASSESSMENT:

Support Female Enumerators in Earthquake Assessments

- Ensure gender parity in teams.
- Allow vulnerable women to voice needs.



### 2. CONSOLIDATED EARTHQUAKE RESPONSE PACKAGE:

Women community volunteers mobilize multipurpose cash package for 1,000 earthquake-affected women and households.



### 3. SUPPORT TO WOMEN-COMMUNITY VOLUNTEERS:

- Facilitation of trainings for two rounds of UN Women's multipurpose cash distributions (in November and December 2023)
- Pilot phase of "Engaged!" initiative supported by GiHA WG and AAP WG.



### 4. SUPPORT WOMEN JOURNALISTS:

- Document women's experiences post-earthquakes.
- Amplify women voices



### 5. GENDER CHAPTER AND INFORMATION ON NEEDS OF WOMEN INTEGRATED IN THE PDNA (PDNA):

Detailed gender chapter to integrate with PDNA



### 6. GIHA WORKING GROUP IN WESTERN REGION: UN WOMEN AND WEFSO CO-CHAIR:

- Led to over 40% of women enumerators participating in earthquake assessment.
- Develop two gender alerts influencing response to earthquake: [Afghanistan Gender Update #1: Earthquake in Herat Province \(9 October 2023\)](#) [Afghanistan Gender Update #2: Earthquake in Herat Province \(19 October 2023\)](#)
- "Engaged!" Initiative Pilot partnering with the Accountability to Affected Populations (AAP): Mobilized 24 women focal points in earthquake-affected villages.