

WOMEN WHO MIGRATE FOR WORK CONTRIBUTE GREATLY TO STRONGER ECONOMIES IN BOTH THEIR COUNTRIES OF ORIGIN AND THEIR COUNTRIES OF DESTINATION.

Nevertheless, they may face risks of violence during their migration journey.

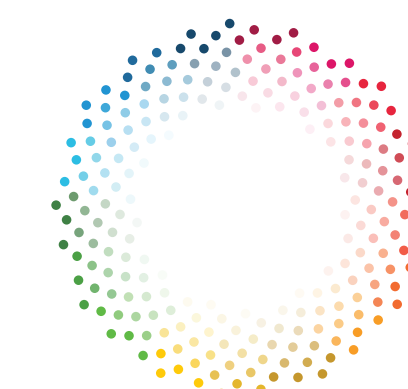


Read the full brief:

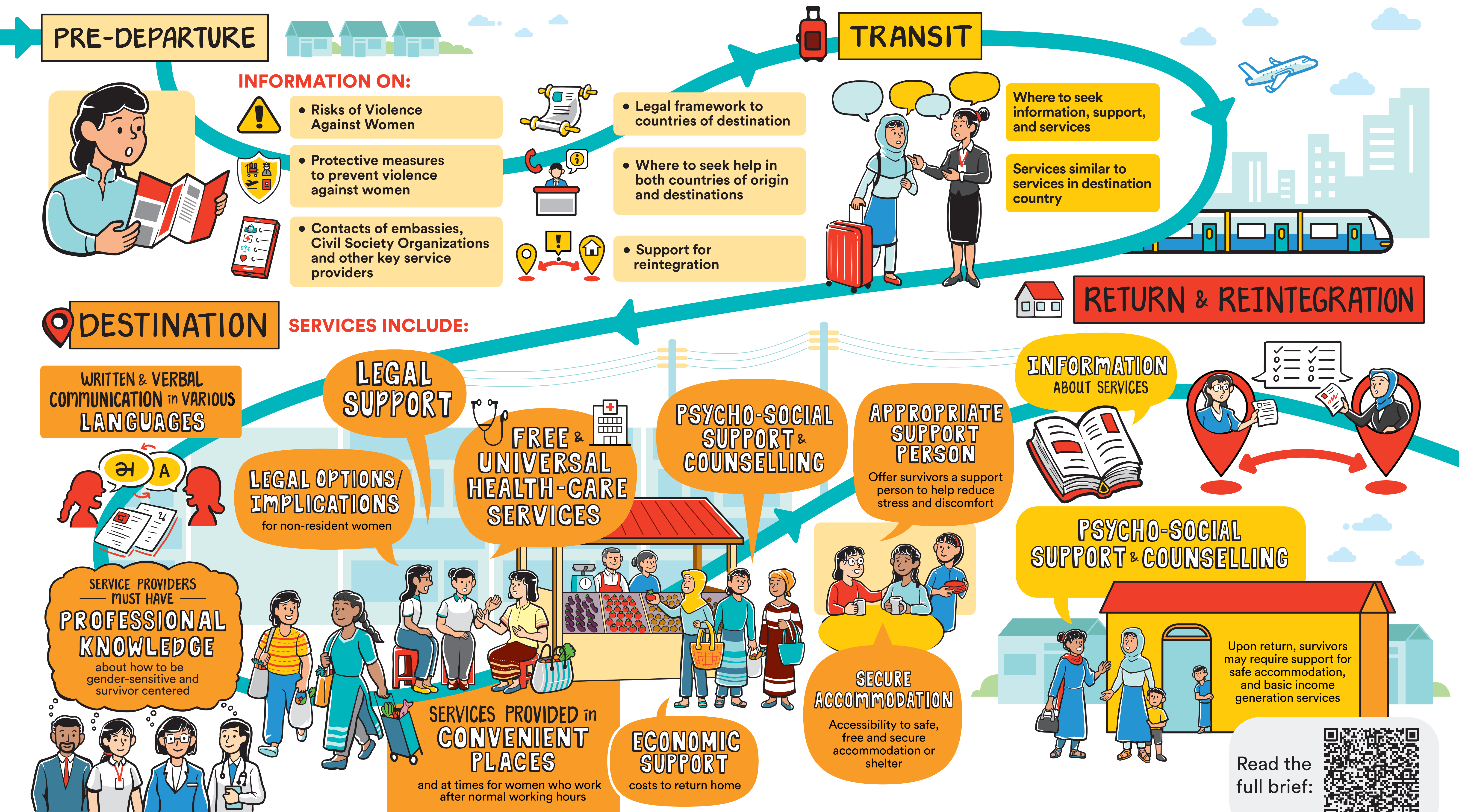


SERVICES for WOMEN WORKERS SUBJECT to VIOLENCE in the MIGRATION CYCLE

WOMEN MIGRANT WORKERS NEED ACCESS TO A VARIETY OF ESSENTIAL SERVICES WHEN THEY ARE SUBJECT TO VIOLENCE. SOME SPECIFIC SERVICES ARE PARTICULARLY RELEVANT WHEN RESPONDING TO THE NEEDS OF WOMEN MIGRANT WORKERS.



Spotlight Initiative



Read the full brief:

